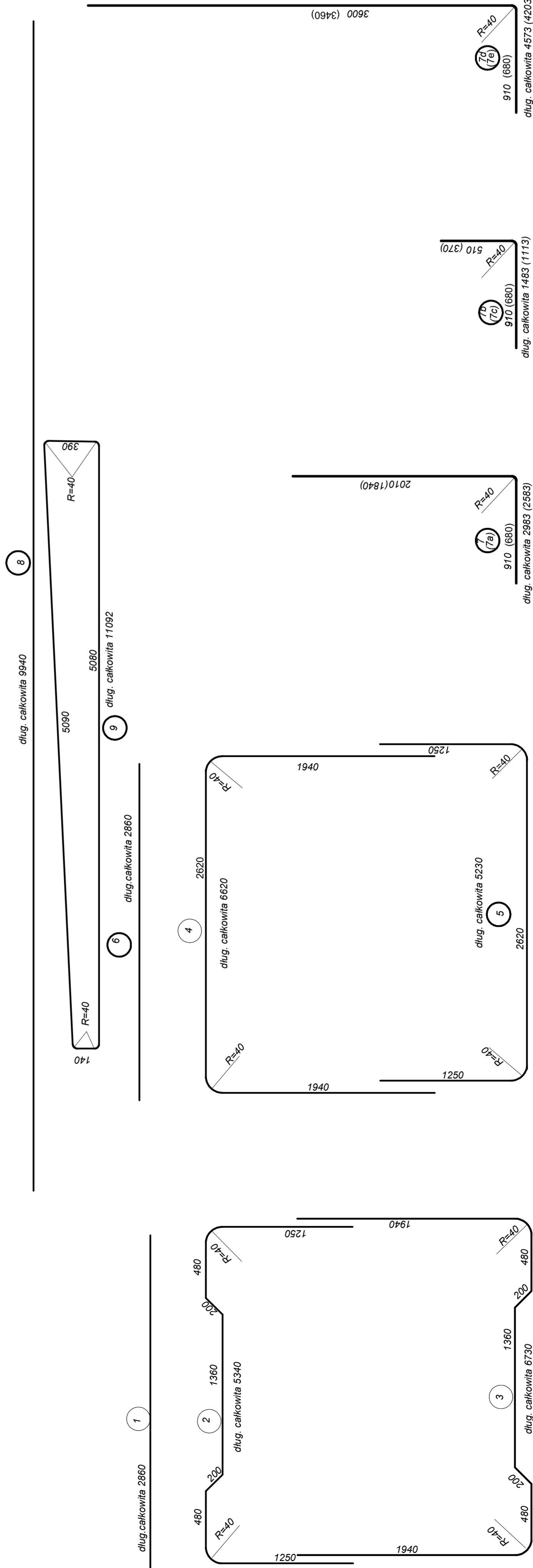
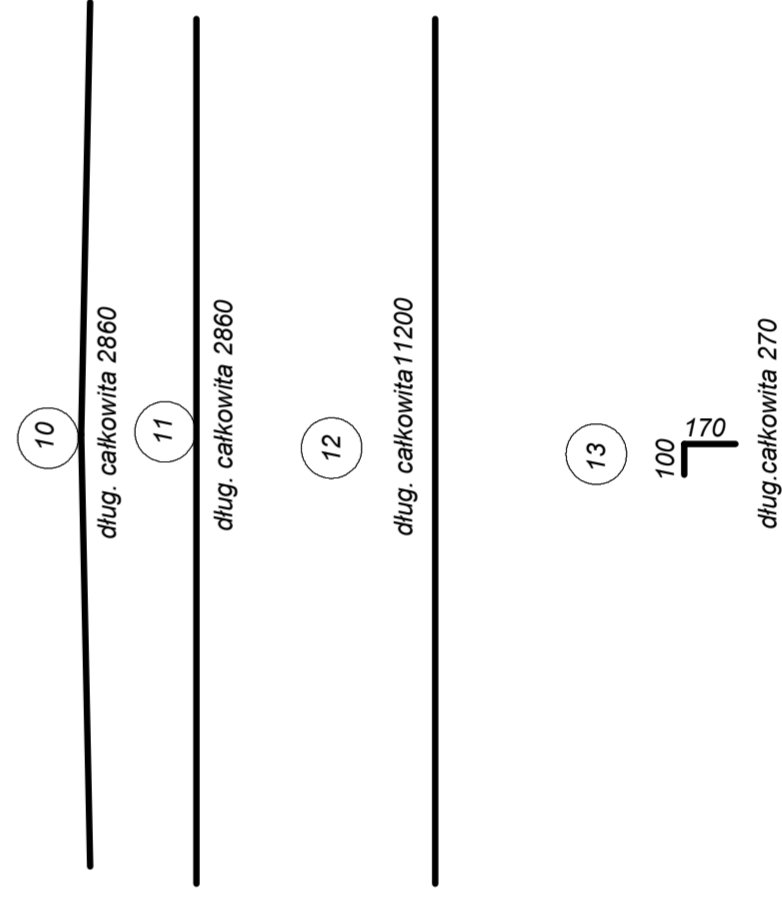
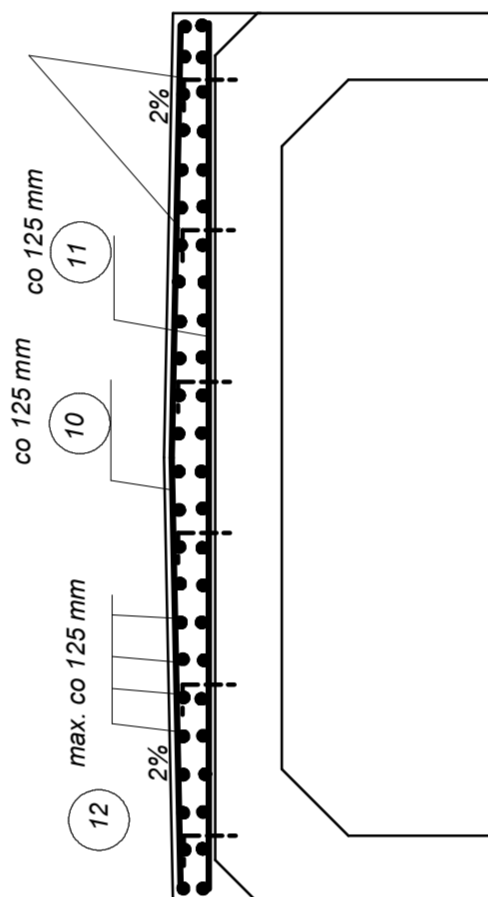


ZBROJENIE PŁYTY ZESPALAJĄCEJ

łączeniaki o odstępach 500x500 mm osadzone w prefabrykatach za pomocą kleju epoksydowego na wlocie i wylocie łączone z ich zbrojeniem



Nr pavla	Smerica pavla mm	Diagno- stika calcivna pavla mm	loži- štit	Lažna diagno- stika pavla (mm) šred 16 mm	Lažna diagno- stika pavla (mm) šred 14 mm	Lažna diagno- stika pavla (mm) šred 12 mm	Lažna diagno- stika pavla (mm) šred 10 mm
1	16	2860	10x2	57,20			
2	14	5340	5x2		53,40		
3	14	6730	5x2		67,30		
4	14	6620	5x2		66,20		
5	14	5230	5x2		52,30		
6	12	2860	20x2			114,40	
7	10	2983	21x2				123,28
7a	10	2583	21x2				108,46
7b	10	1483	21x2				62,30
7c	10	1113	21x2				46,74
7d	10	4573	23x2				210,36
7e	10	4203	23x2				193,34
8	10	9940	24x2				477,12
9	12	11092	54x2			1197,54	
10	10	2860	90				237,40
11	10	2860	90				237,40
12	10	11200	46				515,20
13	16	270	134	36,18			
Lažna diagno- stika				93,38	239,20	1 312,34	2 253,60

Ciężar prętów:

stal A-IIIIN
otulina 4 cm
beton C25/30

stal A-IIIIN
otulina 4 cm
beton C25/30

stal A-IIIIN
otulina 4 cm
beton C25/30

$93,38 \times 1,579 = 147,45 \text{ kg}$
 $239,20 \times 1,208 = 288,95 \text{ kg}$
 $1312,34 \times 0,888 = 1\,165,35 \text{ kg}$
 $2253,60 \times 0,617 = 1\,390,47 \text{ kg}$
Razem 2 922,22 kg

$93,38 \times 1,579 = 147,45 \text{ kg}$
 $239,20 \times 1,208 = 288,95 \text{ kg}$
 $1312,34 \times 0,888 = 1\,165,35 \text{ kg}$
 $2253,60 \times 0,617 = 1\,390,47 \text{ kg}$
Razem 2 922,22 kg

$93,38 \times 1,579 = 147,45 \text{ kg}$
 $239,20 \times 1,208 = 288,95 \text{ kg}$
 $1312,34 \times 0,888 = 1\,165,35 \text{ kg}$
 $2253,60 \times 0,617 = 1\,390,47 \text{ kg}$
Razem 2 922,22 kg

$93,38 \times 1,579 = 147,45 \text{ kg}$
 $239,20 \times 1,208 = 288,95 \text{ kg}$
 $1312,34 \times 0,888 = 1\,165,35 \text{ kg}$
 $2253,60 \times 0,617 = 1\,390,47 \text{ kg}$
Razem 2 922,22 kg